



THE MOUNTAIN GEM

Gem & Mineral Society of Franklin, North Carolina

November 2019 Newsletter

Franklin Gem and Mineral Society

Club Officers and Board of Directors

President: Jane Morgan, (828-342-8703)
 Past President: Al Pribble, (828-342-3119)
 Vice President: Arlon Eldridge, (828-369-5271)
 Secretary: Susan Fritz, (828-524-4936)
 Treasurer: Lake Holland, (828-369-5421)
 Assistant Treasurer: Kathi Walbridge, (828-349-9615)
 Museum Manager: Duane Haskell, (828-349-5123)
 Director (2020): Larry Ellert, (828-349-0774)
 Director (2020): Tom Parker, (828-342-3619)
 Director (2019): Diane Mason, (706-379-1718)
 Director (2019): Tom Sterrett, (828-349-3774)

Committees

Membership: Tom Parker and Diane Mason
 Museum Curator: Larry Ellert, (828-349-0774)
 Curator Emeritus: Fred Plesner, (828-349-4224)
 Museum Gift Shop: Anamay Rossomando (828-349-2807), Vicki Knisley (828-371-4954), & Diane Mason
 Museum Workshop: Virginia Bennis (631-830-5403)
 Publicity: George Fritz, (828-524-4936)
 Field Trip Coordinator: Marsha Harmon, (828 369-7262)
 Program Coordinator: Kathi Walbridge
 Calendar: Jay Mooney, (678-488-0620)
 Gemboree: Kathy Green, (941-387-4397)
 Education/Tours: Marsha Harmon, (828 369-7262)
 Asst Education/Tours: Ron Rossomando (828-349-2807)
 Newsletter Editor: Stacy Walbridge [fgmseditor@gmail.com]

UPCOMING EVENTS

MONTHLY MEETING - November 21st, 6:30 pm, Speaker: Member Tom Parker on Montana Sapphires, Robert C. Carpenter Community Building, 1288 Georgia Road (Hwy 441 South), Franklin.

FIELD TRIPS, November 23rd, Johnson Creek Farm, SC. New area noted for epidote, smoky quartz, amethyst, and beryl. Pre-registration required. Although the trip is full contact Marsha Harmon if you want to be added to the wait list.



December 7, 2019: A local trip to Chunky Gal Mountain to collect rubies in matrix. This trip will be leaving from the museum at 10am and returning about 3pm. Please talk to Marsha or sign up in the museum on the back board. Carpool? Equipment? Questions?

December 7, 2019. There is also a DMC trip to Amos Cunningham Farm in Due West, SC. Please contact Marsha Harmon if you are interested in more information.

The Club is a member of the American Federation of Mineralogical Societies and the Southeast Federation of the Mineralogical Societies.



The Gem and Mineral Society of Franklin, North Carolina, is a 501 (c)(3) organization and donations may be tax deductible. Please remember us when planning your estate.

MINERALS IN YOUR BEER?

As you are drinking your favorite carbonated beverage this Thanksgiving you may want to give thanks to a mineral. DIATOMITE is a friable light-colored sedimentary rock that is mainly composed of the siliceous skeletal remains of diatoms. Diatomite has a very small particle size, a high porosity, and is relatively inert. That makes it an excellent material for use as a filter. Much of the beer brewed in the United States is filtered through crushed diatomite, known as diatomaceous earth. When selecting diatomite for beer filtering, it is important to source the diatomite from a deposit that was formed in a freshwater environment - because the salty marine diatomite will ruin the beer!.
<https://geology.com/rocks/diatomite.shtml>

Club Website: <http://www.fgmm.org>

Club Facebook Page: <https://www.facebook.com/franklingems>

Club Newsletter: fgmseditor@gmail.com,

Club Contact E-mail: franklingemsociety@gmail.com

The Mountain Gem

November 2019



Franklin Gem and Mineral Society

Minutes: October 24, 2019

Susan Fritz

Photographs by George Fritz

President Jane Morgan called the meeting to order on Thursday, October 24, 2019 at 6:30 p.m. at First Christian Church.

President – Jane Morgan reported that the museum was extremely busy during Pumpkin Fest as compared to previous years due to the high turnout downtown.

Vice President – Arlon Eldridge thanked everyone who assisted with set-up for the Leaf Lookers Gem Show.

Minutes – Jane Morgan asked for any corrections, deletions or additions to the September 2019 minutes. There being none, a motion was made by Duane Haskell and seconded by Kathi Walbridge that the minutes be accepted as printed in the newsletter. Voted and passed.

Treasurer – Kathi Walbridge reported that we were in the plus column for the month of September.

Membership – Tom Parker reported 28 members and 2 guests present this evening. He has sent messages to a few members as he noted a couple of addresses are incorrect on the membership list and will be corrected. He reported that life member, Della Samuel, will be 99 years old on 11/17/19. He is going to send her a dirt bag as she continues to enjoy her rocks. A card was circulated among members to sign, which will also be sent.

Museum Manager – Duane Haskell thanked Tom Sterrett for all of his work on the fountain. He asked if anyone had large yard rocks/river rocks to donate and be placed in that area to please let him know.

Curator – Assistant Curator Mark Laing reported that Curator Larry Ellert is in the hospital. Mark has been working on the vault and is nearly finished at which time the inventory will be complete.

Curator Emeritus – Fred Plesner stated one of his many volunteer duties is being on the Awards Committee. An Award of Appreciation was presented to Al Pribble. He also mentioned a radio program that is prerecorded on 10/17 and will be broadcast on 1050 AM Saturday, 10/19, with Stacy Walbridge, Marsha Harmon and Susan Fritz being interviewed by Gordon Mercer.

Gift Shop – Gift shop managers are absent this evening but it was noted that we have a continuous need for members to host in the museum.

Workshop – In the absence of the Workshop Manager, Virginia Bennis, John Hayes reported that she has brought in all the equipment for the gem show demonstrations. Next Tuesday at 10:00 a.m. there is a cabbing class.

Newsletter Editor – Stacy Walbridge stated the newsletter deadline is Tuesday, 11/11, as our next General meeting will be 11/21 due to Thanksgiving. He would appreciate receiving articles from members that would be of interest and appropriate for inclusion in the newsletter.

Field Trips – Marsha Harmon has two different trips planned: 11/09 (fairy crosses) and 11/23 (amethyst, beryl and smoky quartz). Please contact Marsha directly for details.

The Mountain Gem

November 2019



Franklin Gem and Mineral Society Minutes (Continued)

Education – Marsha Harmon thanked those who helped with a tour with 100 children from Fairview.

Gem Show – Kathy Green stated she could still use help; she needs demonstrators and hosts.

Scholarships – This evening Al Pribble will be presenting a \$300 mini-grant to teacher Jenny McMahan, Nantahala School. Jennifer Love, Macon County STEM coordinator, will be our speaker tonight. Ms. Love was the person who made the initial inquiry about our grants.

Programs – Kathi Walbridge reported that tonight's speaker will be Jennifer Love, Macon County STEM coordinator. For November's meeting, Tom Parker will give a talk on Montana sapphires.

NEW BUSINESS:

Jane Morgan stated we need someone to volunteer to host/coordinate the end of year party in December.

Jane Morgan also reported that there is a new book located on the table in the room behind the gift shop at the museum in which to record volunteer time. There is a single page for each member to record his/her own hours.

Arlon Eldridge asked Susan Fritz to draw tickets for the William Holland scholarship. Four tickets were drawn: 1) Larry Ellert; 2) Jane Morgan; 3) Stacy Walbridge and 4) Cindy Pease.

Al Pribble presented a \$300 mini-grant to Jenny McMahan, teacher at Nantahala School. George Fritz took pictures for submission to the newspapers.



**Jennifer Love (STEM Coordinator), Jenny McMahan (4th Grade Science Teacher)
and Al Pribble (Scholarship Chair)**

Door prize winning tickets were drawn and prizes distributed.

The Mountain Gem

November 2019



Franklin Gem and Mineral Society Minutes (Continued)

There being no further business, Jane Morgan adjourned the business meeting at 7:05 p.m.

Members enjoyed refreshments and were treated to a very informative talk presented by Jennifer Love, Macon County STEM coordinator.

PUMPKINFEST 2019

The rain threatening throughout the day on October 19, 2019, did not deter hundreds of people to participate in this year's Pumpkinfest. While the pumpkin roll was ongoing several club members donned costumes to help promote the club and the museum. The sales table did well while Fred Plesner was busy cutting geodes both young and old rock enthusiasts.



Nancy Hopp, Jane Morgan, and Virginal Bennis dressed for the occasion



Fred Plesner introducing a new rockhound to the wonders of geodes.

The Mountain Gem

November 2019



LEAF LOOKERS GEMBOREE

Many thanks to the club members that helped set up and tear down the vendor tables, provided demonstrations, and hosted the club table during this fall's Leaf Lookers Gemboree. Traffic through the show was light this year but there were many opportunities to connect with old friends, meet new ones, and of course search for that one unique slab or mineral.



The Mountain Gem

November 2019



FIELD TRIPS Marsha Harmon

On November 9th, six club members joined together to hunt for staurolites. It was easy pickings on a Brasstown Township country road in western North Carolina. New member, members a couple of years old to the club, and a couple of old farts participated in the dig. The sun felt great but the stories shared were better. There will be clean staurolites for you to see, at our next meeting for lapidary use or specimen displays.



Virginia Bennis, Marsha Harmon, and a happy Bushy Hartman searching for Staurolites.



Tim and Cindy Pease enjoying the day and the hunt for Staurolites.



Examples of Staurolites from Brasstown
Photograph by Nancy McShane

Upcoming Trips

December 7, 2019; a local trip to Chunky Gal Mountain to collect rubies in matrix is planned. This trip will be leaving from the museum at 10am and returning about 3pm. Please talk to Marsha or sign up in the museum on the back board. Carpool? Equipment? Questions?

December 7, 2019. There is also a DMC trip to Amos Cunningham Farm in Due West, SC. Please contact Marsha Harmon if you are interested.

The Mountain Gem

November 2019



GIFT SHOP

Diane Mason



We will have a "make-it" day on Friday January 17, 2020 (weather permitting). The main push for this day will be wire wrapped earrings. If you are a wrapper or have had the wire course, please bring your tools and talent and join us for this fun work day. Hours will be 9 A.M. until 5 P.M. or until life requires you to leave. We will take an hour for lunch. The gift shop is providing the wire and stones as usual. Any help that you can give will be greatly appreciated. Remember that this counts on your volunteer hours.

NOTES FROM THE CLASSROOM

Jerry Mason

The next cabbing class will be January 16 & 17, 2020 (weather permitting) from 9 A.M. until 5 P.M. Sign up in the museum or at the club meeting.

Highlands Murder (April 1902)

Fred Plesner, Curator Emeritus

It is not often that I find information on Highlands Residents who were residents of the "Old Macon County Jail" but this one caught me by surprise. The reason for my surprise was the source of the information. It was excerpted from "The Charlotte Daily Observer" dated Monday, April 14, 1902.

Young Thomas Clingman Cabe was only 17 years old when he was found dead near Highlands in Macon County on Saturday morning, April 12, with a bullet hole in the back of his head. On Sunday evening Ed Potts, the son of W. T. Potts, of Highlands was brought to Franklin and incarcerated in "The Old Macon County Jail" and charged with murder in the death of Thomas Cabe.

The coroner's jury stated "That the said deceased man came to his death by the hand of Ed Potts, and the said Thomas C. Cabe was shot in the back of the head with a 32 calibre ball, and we, the above named jury, also demanded that the said Ed Potts be taken to the county jail, for safe keeping.

JEWELRY BENCH TIPS

TOUCHING UP A BEZEL

Pumice wheels are good for touching up a bezel after you've set the stone. The hardness is about 6 on the Moh's scale, less hard than quartz, so it shouldn't scratch any of your agates or jaspers. However, I'd avoid or be real careful of using pumice near the softer stones like turquoise, amber, howlite, etc.

If you're unsure about the hardness of your wheels, test them on a piece of glass. Glass is about 5 ½ on the Mohs scale, softer than quartz. So if the wheel doesn't harm glass, it's safe for use on the quartzes and harder stones.



My preference is the one inch diameter ones such as those shown at riogrande.com/Product/AdvantEdge-Pumice-Wheels-Medium/332722?pos=2

Work Smarter & Be More Productive With Brad's "How To" Jewelry Books,
[Amazon.com/author/bradfordsmith](https://www.amazon.com/author/bradfordsmith)

The Mountain Gem

November 2019



MAKE YOUR OWN JUMP RINGS Al Pribble



Do you use a lot of jump rings? The price for 4mm x 20 ga sterling rings from Rio Grande is \$0.15 each in packages of 50. The price for 8mm rings of the same gauge is \$0.30 each in packs of 20 (plus shipping). With a little effort you can make your own for about 1/3 that price. Twenty gauge wire is \$0.10/ inch which will make approximately two 4mm rings or one 8mm ring.

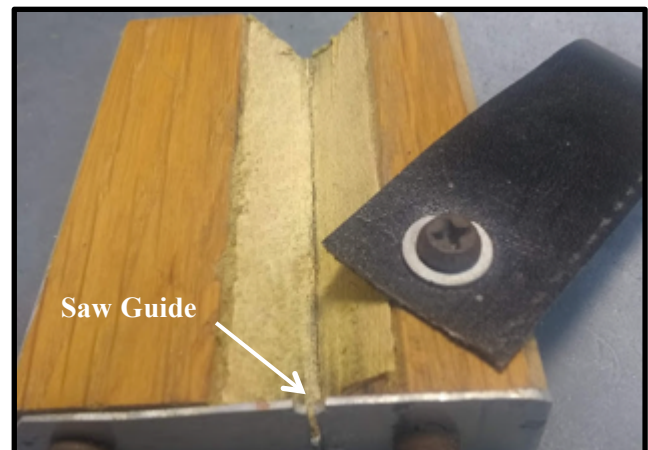
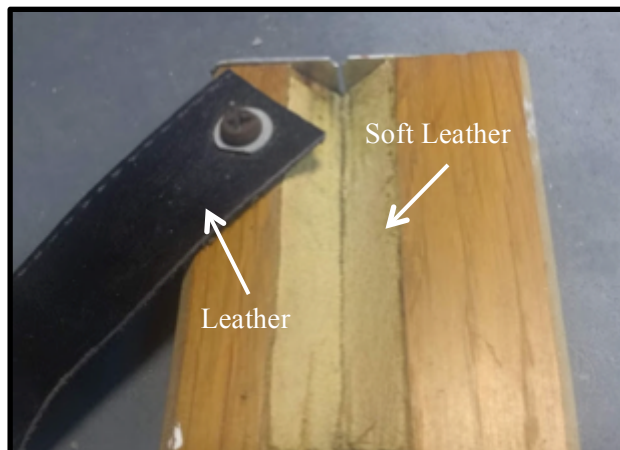
You can purchase a (cheap) set of Transfer Punches (Item 3577) from Harbor Freight for \$11. These are relative soft steel so the points will not stand up for use on any thing harder than wood or soft aluminum but for use in making jump rings this is a good thing. (They are long enough and soft

enough to cut in half and split the cost with a friend.)

I had an old variable speed drill that I mounted on a board, but a hand drill would also work. The next thing you need to do is drill a hole or cut a slot with a hacksaw in one end of the punch (a good punch would be too hard to do this). This anchors the wire so you can start winding it onto the mandrel. To cut a slot, hold the punch firmly in a vice and go slowly until you have it started. To drill a hole it would be best to grind or file a flat on which to start the hole using a drill press. This also gives you the option of making any size and gauge ring you need in any quantity that suits you.

I wind a coil about 10 - 12 mm (1/2") in length in order to be able to handle it easily.

But, now that you have a coil of wire, what are you going to do? I made a jig (shown here) so I could hold it and use a jeweler's saw to cut the rings apart. The leather strap allows holding the coil in place while sawing and the soft leather keeps the coil from slipping. I have also found that slipping the saw blade through the coil and cutting on the bottom allows me to cut all the rings without having them fall apart as each one is cut. The metal saw blade guide on one end of the jig extends about 3/16" below the wood to hold it in place while sawing.



The Mountain Gem

November 2019



ARE YOU A ROCKHOUND OR JUST A MINERAL COLLECTOR?

A rockhound is someone who shows extreme levels of interest in rocks and collecting while a mineral collector is considered someone who just "likes" minerals and rock. So, which one are you? If you're uncertain as to which camp you're really in, here's some surefire signs your level of interest in rocks has exceeded "casual" and you've finally graduated to full-blown "rockhound." Check to see how many of the following signs apply to you, if it's over 10, then watch out! You're a ROCKHOUND!

- The sign on the side of the highway says "Falling Rock" and you pull over to wait.
- The severe sunburn from your vacation is a one inch wide strip of skin at the gap between the tail of your shirt and the top of your pants (also known as "plumbers sunburn").
- Your friend shows you a "pretty stone" they've found, and you work hard to talk them out of it for yourself.
- You son hits his hand with your rock hammer, your mother screams it broken, and you reply it's a fracture, it has good cleavage, and has produced some unusual streaks in your underwear.
- Your wife asks how the soup tastes and you reply, "variable color, greasy surface, low specific gravity, texture smooth with bits of ductile material."
- You lick rocks to show off the wonderful colors.
- Your family puts the birthday candles on a slab of amethyst instead of cake.
- A truck throws a rock into the windshield of your car and you examine the rock first.
- You can pronounce the word "molybdenite" correctly on the first try.
- You think the primary function of road cuts is for easy mineral collecting.
- You own more pieces of quartz than underwear.
- You associate the word "hard" with a value on the Mohs scale instead of "work".
- The rockpile in your garage is taller than Shaq.
- The local university's geology department requests permission to hold field trips in your back yard.
- There's amethyst in your aquarium.
- Your wife has had to ask you to move flats of rocks out of the tub so you can take a bath.
- First on your Christmas list is to attend the Tucson Gem and Mineral Show.
- You've spent more than ten dollars for a book about rocks.
- You find yourself compelled to examine individual rocks in driveway gravel.
- You know the location of every rock shop within a 100 mile radius of your home.
- When they haven't seen you for a week, the rock shop owners send you get well cards.
- You're planning on using a pick and shovel while you're on vacation.
- You can point out where Tsumeb is on a world globe.
- You associate the word "saw" with diamonds instead of "wood".
- You receive a letter from the county informing you a landfill permit is required if you want to put anymore rocks in your backyard.
- Your Internet home page has pictures of your rocks.
- Your boss has asked you not to bring any more rocks to work until they have time to reinforce the floor.

Modified from Rockhounds.com

The Mountain Gem

November 2019



2019 Meeting/Event Schedule

December 14th - End of Year Banquet/Rock Bingo
First Christian Church, 156
Bellevue Park Rd, Franklin, NC 28734

**December Newsletter Deadline is
Monday, December 9, 2019**

UPCOMING SHOWS

**22-24 November 2019: Crestwood, KY
Mineral, Gem & Fossil Show**
Organized by: KYANA Geological Society
CAMP CRESTWOOD
7206 Clore Ln.
Crestwood, KY
Show Hours: Friday & Saturday 10 am - 6pm, Sunday
12pm-5pm
Admission: \$5 or \$10 for 3 day pass, children 16 and
under free with adult, military and dependents are free

**23-24 November 2019: Columbia, SC
52nd Annual Gem, Mineral, & Jewelry Show**
Organized by: Columbia Gem & Mineral Society
Jamil Temple
(206 Jamil Road, Exit 106A off I-26)
Show Hours: Friday & Saturday 10 am - 6pm, Sunday
12pm-5pm
Admission: \$5 or \$10 for 3 day pass, children 16 and
under free with adult, military and dependents are free

**23-24 November 2019: West Palm Beach, FL
53rd Annual Gem, Mineral, Jewelry, Fossil & Bead
Show**
Organized by: Gem & Mineral Society of the Palm
Beaches
Expo Center East at South Florida Fairgrounds (9067
Southern Boulevard)
Hours: Saturday 9am - 6pm, Sunday 10am-5pm
Adults/Seniors 1 day \$9 or 2 day pass \$14
Children under 12 are free

**29 November to 1 December 2019: Mobile, AL
25th Annual Mobile Rock & Gem Show**
Organized by: Mobile Rock & Gem Society
Hours: Fri 1:00-6:00 Sat 9:00-6:00 Sun 10:00-5:00
Abba Shrine Center
7701 Hitt Road, Mobile, AL
Admission \$4.00, Children 12 and under FREE with
Adult. Get a 3-day Admission Pass for \$7.00!
Website: <http://www.mobilerockandgem.com/>

**6-8 December 2019: Montgomery, AL
Montgomery Gem, Mineral & Jewelry Show**
Garrett Coliseum 1555 Federal Drive, Montgomery,
AL Adults \$2.00 daily or \$3.00 for a 3 day weekend
pass. 18 and under free with student ID and one paid
adult ticket

**13-15 December 2019: Marietta, GA
North Atlanta Gem, Mineral, Fossil, and Jewelry
Show**
Gwinnett County Fairgrounds
2405 Sugarloaf Parkway
Lawrenceville, GA 30045
Hours: Fri-Sat 9am - 6pm, Sunday 10am-5pm
Admission \$5 (Cash only at the door), Kids under 15
free if accompanied with a paying adult

**14-15 December 2019: Franklin, Tennessee
39th Annual Earth Treasures Show**
Organized by: Mid-Tennessee Gem & Mineral Society
Williamson County Ag Expo Park (4215 Long Lane,
Franklin) Admission: \$5 (\$7 for a 2-Day pass),
Children under 12 and Scouts in uniform - FREE

The Mountain Gem

November 2019



The Next Meeting

The next meeting will be held at 6:30 PM on November 21st
at the Robert C. Carpenter Community Building, 1288 Georgia Road (Hwy 441 South), Franklin.

Tom Parker on Montana Opals

FGMS Board meets the Tuesday before the regular meeting at 4:00 pm at the Museum

NEW TIME

Franklin Gem and Mineral Museum

25 Phillips Street, Franklin, NC 28734

FRANKLIN
GEM
& MINERAL
MUSEUM
OLD JAIL
FREE ADMISSION

FRANKLIN
GEM
& MINERAL
MUSEUM
OLD JAIL
FREE ADMISSION

Phone: 828-369-7831
In the Old Jail House
FREE ADMISSION
May 1 – October 31
Monday Thru Saturday: 12:00 PM – 4:00 PM
November 1 – April 30
Saturdays: 12:00 PM – 4:00 PM
Open Year Round For Tours
And Special Requests