

THE MOUNTAIN GEM

**Gem & Mineral Society of Franklin, North Carolina
April 2021 Newsletter**

WWW.FGMS.ORG

p. 02 From the President
p. 03 March Meeting Minutes
p. 04 Museum Opening Day
p. 06 The Painted Rock Trail
p. 07 American Mica Corporation
p. 07 Silver Solder Cutting Tip

In This Issue

p. 08 Dichroic or "X-Cubes"
p. 09 SFMS News
p. 10 Member Passing
p. 10 Calling all Museum Volunteers
p. 11 Meeting Announcements
p. 12 Officers, Directors, & Committee Chairs

**Cover Photograph - Hull Mine Fluorescent Wall,
Castle Dome, Az**

**Minerals include calcite, flourite, scheelite, willemite,
barite, hydrozincite, aragonite and selenite**

Photograph by Stacy Walbridge

FROM THE PRESIDENT

Jane Morgan

I hope everyone is doing well. We have a lot of changes coming this Season. All the officers' seats will be up for election. Anyone wanting to run for a position PLEASE let Al Pribble or myself know.



Thank you to Larry Ellert and Mark Laing for coordinating the Cleaning Day and Thank You to ALL the Volunteers. We really appreciate it when members step up to help.



Which comes to a real need. We have been open at the Museum the last few Saturdays from 10-4. It has been great!! However, Volunteers haven't stepped up to say they are willing to help. The signup sheet is in the Museum. May is fast approaching and we need Volunteers to help keep the Museum open. We also need a Museum Volunteer Coordinator. We will be opening on a weekly basis from Wednesday through Saturday. That will be with Volunteer participation. There is not a Gem Show for us this May and that will cut our funds WAY down. We need the revenue.

So Please help us to keep the Museum open to keep the club going strong.

The meeting for the Board, as well as the General Meeting, will be at the First Christian Church of Franklin, 156 Belleview Park Road, Franklin. If the weather is nice bring a pop-up chair or you can get a folding chair from the Church and we can meet in the upper parking lot. Both meetings will start at 6:30 pm.

We appreciate Stacy Walbridge carrying us on Zoom and all the work he has put in to doing that for us. And thank you to Cindy Pease for getting the garden area nice and Spring ready.

Hope to see EVERYONE next week!

Jane

MARCH 25th GENERAL MEETING MINUTES

Susan Fritz, Secretary

The meeting was called to order by President Jane Morgan on Thursday, March 25, 2021 at 7:00 p.m.

Jane Morgan asked for a motion to accept the previous month's minutes as printed in the newsletter. Stacy Walbridge made a motion to accept seconded by Larry Ellert.

Discussion ensued regarding opening the museum on Saturday, April 10 from 10 a.m. until 4 p.m. Museum manager Larry Ellert stated he feels that masks should be required. Jane Morgan stated we will have plenty of disinfectant spray and hand sanitizer. Larry also felt it would be a good thing to be open the entire time for "gem week." Tom Parker mentioned that GL&W will *not* be on Mother's Day weekend as it has in the past but it will be held the following weekend. George Fritz discussed placing a display ad in the paper versus just listing Saturday's re-opening under Community Happenings, stating he could get us a price on a 3 x 5 display ad. However, we need to decide what days we will be open first and this will be re-visited at the April General meeting. For now, just a line or two under Community Happenings. Discussion took place around closing on Mondays and Tuesdays and being open Wednesday through Saturday starting in May; to which most of us seemed to agree.

Larry Ellert stated the museum is in dire need of cleaning after being closed up for a year. Volunteers are needed to clean the museum prior to Saturday, April 10. He will choose two days for cleaning and send out an email requesting volunteers.

Stacy Walbridge announced the deadline for the newsletter as Wednesday, April 21. He is requesting articles, pictures, etc., submitted by anyone to be included in this month's issue.

Kathi Walbridge reported she does not have a program lined up for April.

John Hayes mentioned that on May 8, Kathy James told him that for \$35 we can set up a tent to sell during the Frogs by the River event.

John Hayes also mentioned that Ray Behr was recently in the hospital and is currently receiving dialysis 4 times daily. John will arrange to go see him for a visit. Susan Fritz said she would send a card on behalf of all of us.

We need a volunteer to take over the scheduling of hosts for the museum. If anyone is interested, please contact Jane Morgan or Larry Ellert.

There being no further business, the meeting was adjourned at 7:30 p.m.

Guest speaker this evening is Walt Lombardo, retired geologist living in California and owner of Nevada Mineral and Book Company. Mr. Lombardo gave an extremely interesting presentation on rubies and sapphires of North America.

Editor's Note: In a subsequent email Walt said that if any of our club members get out to California and would like to collect at the pegmatite gem mines please have them contact Walt and he would be happy to assist them.

MUSEUM OPENING DAY

Stacy Walbridge

Photographs by George Fritz

Closed for over a year, Mark Laing and Larry Ellert spent several days with volunteers cleaning the displays and brushing out the cobwebs. By the 9th of April the Museum was ready for opening day.

With an overcast sky threatening rain the morning of the 10th started slow with few visitors but by the afternoon there was a steady stream of visitors and by the end of the day 51 visitors had signed the guest book. Marsha Harmon and Robert Morgan-Kirkpatrick (with his friend Harry) hosted for the day and had a great time with all the new visitors. Many members also showed up throughout the day to say hello and comment on how glad they were to see the Museum open again.



Host Robert Morgan-Kirkpatrick With His friend Harry
Photograph by George Fritz



Mark Dove Holding His Donated Dendritic Slab
Photograph by George Fritz

To help us celebrate opening day, Mark Dove came by and donated a large slab of colorful limestone with dendrites to the museum. Mark purchased the rock at the Rose Creek Mine three years ago and was told that it was jasper. It looks very similar to Utah Limestone but we'll wait until Mark Laing and Larry Ellert examine it before positively identifying it.



Elena and Tom Marsh Dropped in on Opening Day
Photograph by George Fritz



Mary Bernke and Elena Marsh Viewing the Member Made Jewelry
Photograph by George Fritz



Two Museum Kindness Rocks
Photograph by Marsha Harmon





The First Kindness Rock Winners with Robbie
Photograph by Marsha Harmon

New for this year is the Museum's participation in the Painted Rock Trail. Three painted rocks are randomly placed on Main Street with instructions on the back to return them to the Museum for a prize. When someone returns one of the rocks they get to select a small grab bag of minerals. Within hours of opening two rocks were returned by a pair of happy finders.

THE PAINTED ROCK TRAIL

Kindness Rocks, a movement sweeping the nation, has landed in Franklin and has been embraced by residents and visitors.

The Kindness Rocks Project was created to spread inspiration and motivation for unsuspecting recipients through random inspirational painted rocks dropped along the way. When Franklin businesses heard of the project they thought this would be perfect for Franklin. From there, Franklin NC Rocks, a Facebook Page, was launched to track the rocks and their travels. Merchants, individuals, families, and other groups can paint their rocks and leave them throughout the town for lucky finders. More information can be found on the Facebook Page

Our Museum has added a little twist to the project with messages on the back of the rocks to return them to the Museum for a prize. When returned, the finders get a grab bag (from behind counter, not on wall). The returned rocks are placed behind the counter and Robbie will hide them again for the next week.

AMERICAN MICA CORPORATION

By Fred Plesner, Curator Emeritus

This week I was presented with the records of the American Mica Corporation to be given to the Franklin Gem and Mineral Museum. These records will be presented to our curator Mark Laing as soon as I can make appropriate arrangements.

The American Mica Corporation was a Macon County company that operated out of the Nantahala Building (now the courthouse annex) on Main Street from 1950 to 1954.

These records are all bound in one hardbound volume and include the incorporation papers, several stock certificates, lease agreements, monthly minutes and financial statements. When appropriate display arrangements can be made parts of these records would make a fine display. In the interim, perhaps we might display them when we can all get together again

Silver Solder Cutting Tip

By Al Pribble

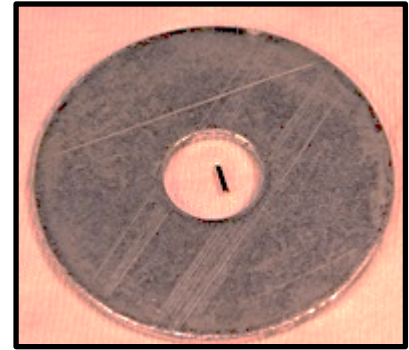
Silver soldering usually involves placing small chips of solder, known as pallions next to the joint and heating the base metal until the solder melts. This must occur before the base metal itself melts. In addition to different melting points, silver solder comes in different forms. Two very common forms that jewelers use are sheet and wire, the other being paste.

My personal preference is wire and here's why: with sheet solder one must first cut it into a strip or cut multiple cuts into the edge of a sheet then cut the individual pallions. With wire I flatten it slightly with a hammer and cut the pieces to length.

I had always had a problem with getting a uniform length when cutting but I recently got a new tip (at least for me) from one of our excellent jewelry makers, Lee Perry Bender.



When you need to cut silver solder for pallions you would like for them to be the same size each time and there needs to be way to keep them popping all over your work bench as you cut them. The way to do this in one operation

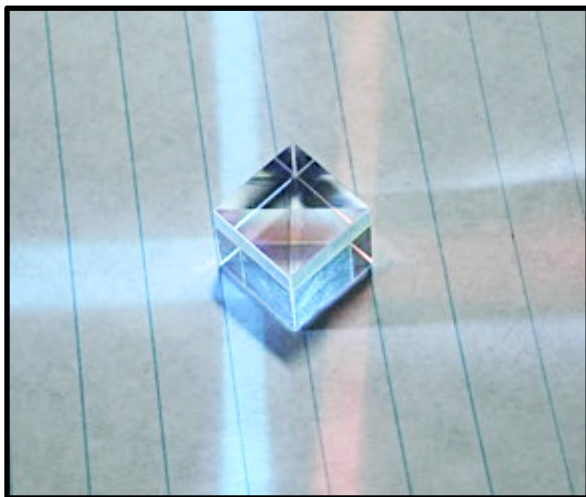


is with a large washer. Using a 1- 1/2" to 2" inch washer with a 3/4" or 1" center hole use the thickness of the washer to rest your cutters on and as you snip the wire or strip of sheet solder the center of the washer will contain it. By turning the cutters with the flat side up or down will determine the length of the pallion.

DICHROIC OR "X-CUBES"

By Virginia Bennis

Photographs by Stacy Walbridge



Dichroic or Dichromatic cubes are used in light experiments. They reflect different colors of light in different directions so each facet reflects a different color.

Our member, Matt Castor, gave me the cube and another member, Norm Holbert, recommended the Portuguese Cut, 167 facets. As you can see, the results are spectacular. I hope to cut many more of these and to teach you how to cut your own.



Faceted Dichroic Cube – 167 Facets

A Dichroic cube is a special arrangement of filters and prisms that can reflect different colors of light in different directions. When light enters one face of the cube, the special nanometer-thin coatings inside the prism either reflect or pass-through light depending on its wavelength. These coatings are called *dichroic* coatings, meaning “two-colored”, in reference to the two colors that split off when they encounter the coating, and give the dichroic cube its name. One coating reflects only red light and sends it out one side of the cube, and another only reflects blue light, sending it out another side. The remaining light (which is mostly green), passes straight through the cube.

Ref: <https://www.onelectrontech.com/the-colorful-world-of-dichroic-cubes/>

SFMS NEWS

SFMS FIELD TRIPS ANNOUNCEMENT

By Lori Carter, DMC Coordinator

I hope everyone is healthy and safe as we enter this new year. COVID-19 vaccines are providing some post-COVID optimism. We are nearing a time when we can share field trips with one another again.

Unfortunately, even with vaccines available, it appears that the virus may still be a problem this year. Until we know for certain that we can gather together safely, we must approach the situation with great caution.

So in the interest of safety, I am moving the entire DMC schedule forward by another year.

All trips scheduled for 2021 are moved to 2022, 2022 to 2023, 2023 to 2024, and 2024 to 2025.

The new schedule is posted on the SFMS website here:
http://www.amfed.org/sfms/_dmc/dixie-proposed-ft.htm

Please let me know if you have any questions.

Many thanks to all of the clubs who continue to support the DMC Field Trip Sharing Program as we work our way through this.

Stay healthy, stay safe.

SFMS ROCKHOUND ROUND-UP

By Lori Heinemann, SFMS Editor

The 3rd Annual Rockhound Roundup was a success in March 2021. Our first year we had 19 vendors. In our second year we grew to 22 vendors. This year we are up to 25 vendors.

The venue location of Suwanee Music Park in Live, Oak, FL. will be able to confirm the dates for next year, early, So, stay tuned for information on our 2022 Rockhound Round-Up, the 4th annual event!

MEMBER PASSING

By Lorrie Deal

Wendy Frank and I were new members back before this pandemic started and enjoyed visiting the meetings at the church. I don't know if you heard but Wendy died last May. Her husband, Dana, died 3 months later. Neither were Covid related. We were so looking forward to the jaunts for gems and were starting to plan to Rock Hound thru our own county.

Please let the others know of Wendy's passing. She is greatly missed. Thank you,

Lorrie Deal

CALLING ALL MUSEUM VOLUNTEERS

We have a desperate need for a Museum Volunteer coordinator and Museum Host Volunteers.

In order for our Museum to remain open through the summer we need your help so don't be shy and donate a few hours of your time.

The club appreciates any time you can donate and the Town of Franklin does as well.






Anil B. Dholakia, Inc.
Fine Gemstones & Jewelry
P. O. Box 1824
Franklin, NC 28744




Varshana Dholakia GIA, GG
Earl McGaughey
jwala123@aol.com
(828) 342-3135
(828) 342-7340

Wholesale & Retail 



COWEE MTN. RUBY MINE
Precious, semi-precious stones
Jewelry repair, gold & silver
Mine dirt shipped anywhere in US
Cut & rough gem stones

828-369-5271 **Amiee Bailey, General Manager**
Fax: 828-524-0633 **Sonja H. & Arlon Eldridge, owners**
6771 Sylva Road email: cowee@yahoo.com
Franklin, NC 28734 web:www.coweemtnrubymine.com



71 rockhaven dr
Franklin NC 28734

oldcardinalgemmine.com@gmail.com

8285247306
8283696673
Darcel, Charles, Morgan ,Isaiah

**OLD CARDINAL
GEM MINE**



ROSE CREEK MINE
Gift & Rock Shop
GOOD CLEAN DIRTY FUN!

Beginners Welcome • Equipment Supplied
Covered Flume For Rain Or Shine
Discounts For Groups & Minor Miners
Restroom • Picnic Area • Snacks

WARNING:
Mining Can
Be Addictive.

OPEN
APRIL 1 - OCTOBER 31
CLOSED SUNDAYS

115 TERRACE RIDGE PK • FRANKLIN, NC • 828-349-9774 • ROCKS@ROSECREEKMINE.COM
WWW.ROSECREEKMINE.COM

April General Meeting
6:30 pm Thursday, April 29, 2021
This will be an In Person Meeting
First Christian Church of Franklin
156 Belleview Park Road
Franklin, NC

April Board Meeting
6:30 pm Tuesday, April 27, 2021
First Christian Church of Franklin
156 Belleview Park Road
Franklin, NC

Club Officers and Board of Directors

President: Jane Morgan, (828-342-8703)
Past President: Al Pribble, (828-342-3119)
Vice President: Arlon Eldridge, (828-369-5271)
Secretary: Susan Fritz, (828-524-4936)
Treasurer: Lake Holland, (828-369-5421)
Assistant Treasurer: Kathi Walbridge, (802-598-7025)
Museum Manager: Larry Ellert, (727-455-1849)
Director (2020): Mark Laing, (864-910-1580)
Director (2020): Tom Parker, (828-342-3619)
Director (2019): Diane Mason, (706-379-1718)
Director (2019): Tom Sterrett, (828-349-3774)

The Club is a member of the American Federation of Mineralogical Societies and the Southeast Federation of the Mineralogical Societies.

Committees

Membership: Tom Parker and Diane Mason
Museum Curator: Mark Laing, (864-910-1580)
Curator Emeritus: Fred Plesner, (828-349-4224)
Museum Gift Shop: Anamay Rossomando (828-349-2807)
Museum Workshop: Virginia Bennis (631-830-5403)
Publicity: George Fritz, (828-524-4936)
Field Trip Coordinator: Marsha Harmon, (828 369-7262)
Program Coordinator: Kathi Walbridge
Museum Calendar: Jay Mooney, (678-488-0620)
Gemborees: TBD
Education/Tours: Marsha Harmon, (828 369-7262)
Asst Education/Tours: Ron Rossomando (828-349-2807)
Web Master: Melissa Barfield (803-724-8312)
Newsletter Editor: Stacy Walbridge, fgmseditor@gmail.com

