



THE MOUNTAIN GEM

Gem & Mineral Society of Franklin, North Carolina
August 2020 Newsletter



Franklin Gem and Mineral Society

Club Officers and Board of Directors

President: Jane Morgan, (828-342-8703)
Past President: Al Pribble, (828-342-3119)
Vice President: Arlon Eldridge, (828-369-5271)
Secretary: Susan Fritz, (828-524-4936)
Treasurer: Lake Holland, (828-369-5421)
Assistant Treasurer: Kathi Walbridge, (828-349-9615)
Museum Manager: Larry Ellert, (828-349-0774)
Director (2020): Larry Ellert, (828-349-0774)
Director (2020): Tom Parker, (828-342-3619)
Director (2019): Diane Mason, (706-379-1718)
Director (2019): Tom Sterrett, (828-349-3774)

Committees

Membership: Tom Parker and Diane Mason
Museum Curator: Mark Laing, (864-910-1580)
Curator Emeritus: Fred Plesner, (828-349-4224)
Museum Gift Shop: Nancy Hopp (828-508-0637), Anamay Rossomando (828-349-2807)
Museum Workshop: Virginia Bennis (631-830-5403)
Publicity: George Fritz, (828-524-4936)
Field Trip Coordinator: Marsha Harmon, (828 369-7262)
Program Coordinator: Kathi Walbridge
Museum Calendar: Jay Mooney, (678-488-0620)
Gemborees: Norm Holbert (828-634-0350)
Education/Tours: Marsha Harmon, (828 369-7262)
Asst Education/Tours: Ron Rossomando (828-349-2807)
Web Master: Melissa Barfield (803-724-8312)
Newsletter Editor: Stacy Walbridge [fgmseditor@gmail.com]

The Club is a member of the American Federation of Mineralogical Societies and the Southeast Federation of the Mineralogical Societies.



The Gem and Mineral Society of Franklin, North Carolina, is a 501 (c)(3) organization and donations may be tax deductible. Please remember us when planning your estate.

FROM THE EDITOR

Stacy Walbridge

Where did summer go? By this time of year we normally would have had our picnic, gone on several field trips, spent time at the Museum, and connected with members that we hadn't seen for months. Although Covid cancelled most of our normal activities we are beginning to emerge from the worst of it. G&LW, Highlands Road, and Echo Valley shows were successfully held earlier this month. There was a lot of uncertainty leading up to the shows; would any of the shows still be held, would masks be mandatory, how many dealers would be allowed, would buyers show up, what were the new rules? As it turned out there were plenty of masks evident, dealers were spread out for social distancing, and although attendance was down from previous years there was a steady stream of buyers over the weekend. Members Varshana Dholakia-McGaughey, Earl McGaughey, and son, Shawn, operated 2 booths at G&LW and said it turned out better than expected.



Members Earl McGaughey, Varshana Dholakia-McGaughey and Shawn at their G&LW Booth

In This Issue

p. 02 Souped Up Ford by Fred Plesner
p. 02 August Birthstone
p. 03 Staurolites by Stacy Walbridge
p. 03 Bench Tips by Brad Smith

p. 04 Cabochon Polishing by Al Pribble
p. 06 Members Trading Post
p. 08 Upcoming Shows
p. 09 Quarantine Word Search Answers

Club Website: <http://www.fgmm.org>

Club Facebook Page: <https://www.facebook.com/franklingems>

Club Newsletter: fgmseditor@gmail.com,

Club Contact E-mail: franklingemsociety@gmail.com

The Mountain Gem

August 2020



Even though we are still limited on what we can do as a club we are going to try our first web-based ZOOM board/ committee meeting on the 25th. This will be new for most of us but I have recently participated in several other club's meetings and webinars using Zoom so I know that it is not perfect but it is a huge improvement over not meeting. We will just need to work through any technical issues. If all goes well, we may try a general meeting on Zoom.

We are expanding the Trading Post feature to include advertising member's businesses that are gem or mineral related. If you want to have your gem or mineral related business card, Etsy site, or webpage added just send me an email with the information. I am still looking for members to use this feature to trade or sell their unwanted lapidary equipment, tools, slabs, or rough material so send me your information and we'll get it in the newsletter.

Unfortunately our Leaf Lookers Gemboree has been cancelled but there are still several area shows tentatively scheduled for September and October.

No one knows where we'll be next year at this time or what we will be doing but the important thing is for everyone to stay healthy and I look forward to seeing you soon in person or on ZOOM.

Stacy Walbridge

AUGUST BIRTHSTONE: Peridot

From: <https://www.gia.edu>



Yellow-green gem variety of the mineral olivine. Found as nodules in volcanic rock, occasionally as crystals lining veins in mountains of Myanmar and Pakistan, and occasionally inside meteorites. The ancient Egyptians mined peridot on the Red Sea island of Zabargad, the source for many large fine peridots in the world's museums. The Egyptians called it the "gem of the sun." Today this gem is still prized for its restful yellowish green hues and long history. Large strongly-colored, examples can be spectacular, and attractive smaller gems are available for jewelry at all price points.

A Souped-Up Ford

Fred Plesner, Curator Emeritus

Back in January of 1955 Highway Patrolman A. A. Lewis was patrolling U. S. 23 / 441 south of Franklin, N. C. around the mid-night hour when he came upon a "souped-up" 1940 Ford. Patrolman Lewis pulled over to make a routine check on the vehicle when a male passenger in the vehicle jumped out and ran. Whoever that man was he has yet to be found.

The driver of that fancied-up Ford turned out to be Arthur Glenn Schachman one of six long term prisoners who had escaped from the Virginia State Prison on Saturday, January 15, 1955. Mr. Schachman was given temporary quarters in the "slammer" at the Macon County Jail in Franklin while he waited for the authorities from Virginia to arrive and return him to prison to finish his 16 – year sentence for armed Robbery.

As for that 1940 ford it turned out to be a stolen vehicle from Raleigh. Mr. Schachman offered his opinion of that "Hot-Rodded" Ford "It's not so hot - - - it was skipping on the Hills!"

Early on Tuesday morning, January 18, 1955, a 1954 Ford pick-up truck was stolen from Franklin Frozen Foods, Inc. and Patrolman Lewis said that it was highly probable that it was stolen by that, elusive man who fled from that "Souped-Up" 1940 Ford

The Mountain Gem

August 2020



STAUROLITES

Stacy Walbridge

A couple of newsletters back Marsha Harmon volunteered to lead some local field trips if individuals were interested. Kathi had never visited the local Staurolite location so we made arrangements with Marsha to meet and travel to the site. Masks and social distancing were in effect but that did not slow us down during the site visit and dig.

When we arrived, we could see several bare spots so those were the first areas searched. Immediately all three of us were picking up small pieces of Staurolites. After a few minutes we settled down and began systematically working the area. Marsha brought a screen and water to sift through some of the piles of dirt. Kathi was surface skimming while I settled in one area to dig and search.



Stacy & Marsha packing it in for the day.

After a couple of hours the temperature was climbing to the high 80s and the humidity was close behind. By that time we had collected numerous samples, some of which had some real potential, so we decided to leave the rest for future collectors.

It was good to get out and dig in the dirt again and to see Marsha so now we clean our finds and look forward to the next time.



Some of the collected Staurolites

JEWELRY BENCH TIPS

Dental Floss

When testing the fit of a stone in the bezel, it's all too easy to get it stuck. If tapping the finding or opening up the bezel a bit with a knife blade doesn't dislodge it, you might have to drill a small hole in the bottom and push it out with a needle. To avoid all this frustration, use the old dental floss trick. Lay a piece of over the top of the bezel before you seat the stone. Then just pull on the string to remove the stone.



Work Smarter With Brad's "How To" Jewelry Books, [Amazon.com/author/bradfordsmith](https://www.amazon.com/author/bradfordsmith)

The Mountain Gem

August 2020



CABOCHON POLISHING

Al Pribble



If you want to get the best polish possible for your stone, you need to use the correct combination of buffing wheel (or disk) and polishing compound. Some stones will polish equally well with several combinations.

Polishing does not remove any material from the surface. If scratches develop, the stone must be re-sanded.

The following information should be a useful guide if you wonder about which material to use to get that mirror finish.

BUFFS

Canvas: Canvas is useful when polishing heat-sensitive stones because it develops very little friction.

Phenolic: Phenolic tools or phenolic lap disc (cab laps) are useful when impregnated with diamond grit. 14,000 Micron (pre-polish) or 50,000 Micron (polish) diamond compound can be applied to the surface of the gemstone and worked with a phenolic carving tool. It can also be applied to the surface of a phenolic lap disc and worked with the gemstone mounted at the end of a dop stick. The diamond will charge the phenolic plate making smoothing and polishing easier.

Felt: Felt is useful for polishing glass and stones of even texture. It is not recommended for gemstones that under cut. Friction on felt generates heat.

Leather: Leather is a versatile buffing material that is both efficient and economical. Leather generates heat, but not as much as felt.

Muslin: Muslin buffs are recommended for soft stones and gems that are heat sensitive.

POLISHING COMPOUNDS

Cerium Oxide: Cerium oxide will polish at a faster rate than conventional polishing compounds and produce a superior optical lens surface with no staining or caking. Because it will polish faster, a lower concentration can be used. It is recommended for use on leather, felt, polyurethane foams, and thermoplastic polishing pads. It is a favored polish for quartz type minerals and other gemstone types. It is not recommended for gemstones that will undercut.



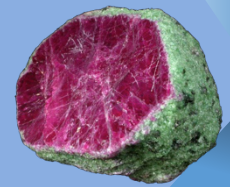
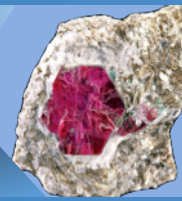
Linde "A": A .3 micron aluminum powder that is carefully graded for uniformity of grain size. It is excellent for polishing stones that will undercut. Excellent for hard to polish stones.

Chrom Oxide: Chromium oxide is a hard-polishing agent. It is green in color and stains badly. It is useful for polishing jade and stones that will undercut.

Tin Oxide: Tin oxide is an excellent general-purpose polish. It is used to provide a final high gloss finish

The Mountain Gem

August 2020



These tables should provide you with the right combinations of Buff and Polish to get that mirror finish on your Cabochons.

Material	Bufs				
	Canvas	Phenolic	Felt	Leather	Muslin
Agate		Diamond	Cerium Oxide	Cerium Oxide	
Amethyst		Diamond	Cerium Oxide	Cerium Oxide	
Beryl		Diamond	Cerium Oxide	Linde 'A'/Chrom Oxide	
Calcite				Tin Oxide	Tin Oxide
Chloastroite			Cerium Oxide		
Feldspar			Cerium Oxide		
Garnet		Diamond	Chrom/Cerium Oxide		
Glass			Cerium Oxide		
Goldstone			Cerium Oxide		
Hematite	Linde 'A'				Cerium Oxide
Howlite			Tin Oxide	Linde 'A'	
Jadeite				Linde 'A'/Chrom Oxide	Tin Oxide
Jasper			Cerium Oxide	Cerium Oxide	
Lapis Lazuli				Linde 'A'/Chrom Oxide	
Malachite				Linde 'A'/Chrom Oxide	
Nephrite-Jade				Chrom Oxide	Tin Oxide

Material	Bufs				
	Canvas	Phenolic	Felt	Leather	Muslin
Obsidian/Glass			Cerium Oxide		
Opal-Australian			Cerium Oxide		Tin Oxide
Opal-Mexican		Diamond			
Psilomelane				Linde 'A'/Tin Oxide	
Petosky stone	Tin Oxide				
Quartz		Diamond	Cerium Oxide	Cerium Oxide	
Rhodochrosite				Linde 'A'/Tin Oxide	
Rhodonite				Linde 'A'/Cerium Oxide	
Serpentine				Linde 'A'/Tin Oxide	
Sodalite			Cerium Oxide		
Thomsonite			Cerium Oxide		
Tigers Eye				Cerium Oxide	
Tourmaline				Linde 'A'/Tin Oxide	
Turquoise				Linde 'A'/Tin Oxide	
Unikite			Cerium Oxide		
Variscite			Cerium/Tin Oxide	Cerium Oxide	
Wonderstone			Tin Oxide	Linde 'A'	

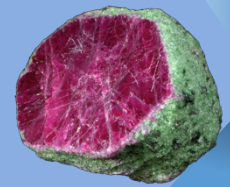
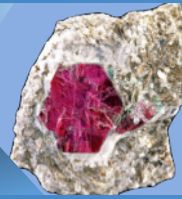
And Don't Forget FGMS When You Order On Amazon Smile



The Gem & Mineral Society of Franklin will receive 0.5% of the purchase price

The Mountain Gem

August 2020



MEMBER'S TRADING POST & MARKETPLACE



In last month's newsletter we began a new feature for members to sell their used/unwanted lapidary hardware, tools, minerals, fossils, slabs, etc. Unfortunately, there were only 4 items for sale and no takers. So this month 2 of those items are still for sale and we're expanding the feature to include member's business cards, websites, and Etsy sites, that are related to Gems, Minerals, Lapidary, Jewelry, Rockhounding... If you would like your information included in the Newsletter just send an email to fgmseditor@gmail.com with your information.

If you have an interest in one of the items contact the seller and work out the details. For these 2 items all the proceeds will go to the Museum. We will try this for a couple of months to see if there is interest, so members, look through your collections and equipment and follow the directions below to help the Museum.

What is needed from the Seller; send an email to fgmsnewsletter@gmail.com by the Newsletter deadline or earlier and include:

- Seller Name
- Seller Contact Information
- Picture of Item for Sale
- Price OBO

For the Buyer:

If you see an item that you would like to purchase then you will contact the seller directly and work out the price and logistics for completing the sale.

Upon Sale Completion:

Once the sale takes place then the donated funds should be placed in an envelope along with the seller's name and placed in the lockbox (*Donations Box*) at the Museum. A receipt for the donation will be provided to the seller at a later date (*if desired*).



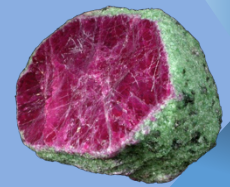
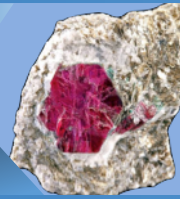
Item 1 - \$10

Tool holder and bucket. Good for field trips and what-have-you. \$10
All proceeds to the Museum.

Contact: Al Pribble, 828-369-2548
828-342-3119 (cell).

The Mountain Gem

August 2020



Item 4 - \$15



Mitutoyo 6 inch vernier caliper with case, .001 inch resolution. Good condition, eyes needed to go to a digital caliper. \$15

All proceeds go to the museum

Contact: Stacy Walbridge, 802-318-6624 (cell)

ROSE CREEK MINE
Gift & Rock Shop
GOOD CLEAN DIRTY FUN!

Beginners Welcome • Equipment Supplied
Covered Flume For Rain Or Shine
Discounts For Groups & Minor Miners
Restroom • Picnic Area • Snacks

WARNING:
Mining Can
Be Addictive.

OPEN
APRIL 1 - OCTOBER 31
CLOSED SUNDAYS

115 TERRACE RIDGE DR. • FRANKLIN, NC • 828-349-3774 • ROCKS@ROSECREEKMINE.COM
WWW.ROSECREEKMINE.COM

Wholesale & Retail

COWEE MTN. RUBY MINE

Precious, semi-precious stones
Jewelry repair, gold & silver
Mine dirt shipped anywhere in US
Cut & rough gem stones

828-369-5271
Fax: 828-524-0633
6771 Sylva Road
Franklin, NC 28734

Amiee Bailey, General Manager
Sonja H. & Arlon Eldridge, owners
email: cowee@yahoo.com
web: www.coweemtnrubymine.com

**September Newsletter Deadline is
Friday, September 18, 2020**

71 rockhaven dr
Franklin NC 28734

oldcardinalgemmine.com@gmail.com

8285247306
8283696673
Darcel, Charles, Morgan ,Isaiah

**OLD CARDINAL
GEM MINE**

The Mountain Gem

August 2020



UPCOMING SHOWS

11-13 September: Winston-Salem, NC

Forsyth Gem & Mineral Club

“Gems and Minerals of Brazil”

Show Hours: Friday 10am-7pm, Saturday 10am - 7pm, Sunday 12am-5pm

Winston-Salem Fairgrounds-Educational Bldg

Gate 9 – off 27th Street.

28 dealers, educational exhibits, demonstrations, and special presentations on the minerals of Brazil.

Admission: \$3 adults, free for children through 12th grade accompanied by a paid adult

18-20—MARIETTA, GEORGIA: Annual show; Bellpoint Gem Show; Cobb County Civic Center, 548 S. Marietta Pkwy.; Fri. 10-6, Sat. 10-6, Sun. 10-5; Adults \$5, free admission for children under 15 with a paying adult; Dealers offering jewelry, minerals, fossils, healing stones, crystals, geodes, beads, and gems; contact Damian; Email: mbellpoint@gmail.com; Website: www.bellpointpromotions.com

2-4 October—SARASOTA, FLORIDA: Show and sale; Frank Cox Productions; Sarasota Municipal Auditorium, 801 N. Tamiami Trail (U.S. 41); daily 10-5, daily 10-5, daily 10-5; Adults \$5 (\$1 off with mention of this listing); Gems, crystals, minerals, rocks, and jewelry for sale; contact Frank Cox, 755 S. Palm Ave. #203, Sarasota 34236, (941) 954-02; Email: frankcox@comcast.net; Website: http://www.frankcoxproductions.com

2-4 October: Graves Mtn, Lincolnton, GA

Rock Swap & Dig. The mountain is open for collecting from 8am to 6 pm each day. All participants must stop at the welcome table in the Hospitality tent to sign a liability release and make a small contribution to defray the cost of opening the mountain and providing port-o-lets. There will be several golf cart type, four wheeled vehicles available to transport those participants who have trouble walking long distances. The dig will cease and

everyone is expected to be off the mountain by around 6 pm each day. An area will be setup in the upper parking lot for daily rock swap tables. Hot food cooked on the grill, cold drinks and chips will be available for purchase on the mountain during all three days of these events.

9-11 October: Huntsville, Alabama

Huntsville Gem & Mineral Society,

Show Hours: Friday & Saturday 10am-6pm, Sunday 12am-5pm

Jaycee Community Building, 2180 Airport Road SW
Parking is free and conveniently close to local restaurants and shopping. Vendors offering a wide variety of minerals, crystals, jewelry, lapidary supplies, rock-hunting supplies, and more! You'll also see gem, mineral, and jewelry displays, and lapidary and related arts and crafts demonstrations! Kids of all ages are invited to come play as we learn how to classify rock specimens, conduct the Mohs hardness test, build crystal models, dig for fossils, pan for gemstones, and go on a scavenger hunt! And younger children can make fossil rubbings and take pictures with our 8ft-tall T-Rex dinosaur! There'll also be a fluorescent room where you'll marvel at the glowing rocks and minerals!

Admission: A \$3.00 donation per person is requested at the door, with children under 5 free, and there'll be weekend passes available for \$5.00. Plus we'll have an hourly drawing for Door Prizes and Raffle Prizes so save those ticket stubs!

<https://huntsvillegms.org/gem-jewelry-mineral-show/>

The Mountain Gem

August 2020

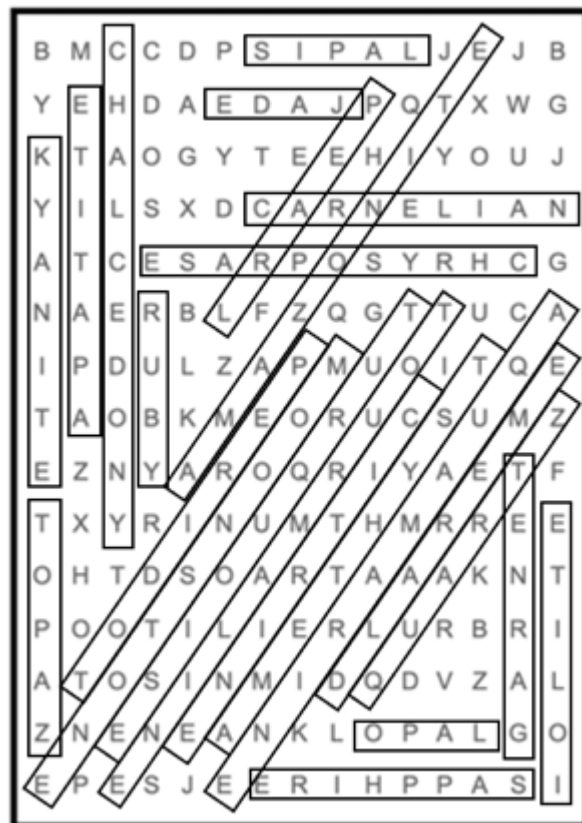


Gem Hunting in Quarantine

By Kathi Walbridge

Last month you were searching for Gems during the Quarantine. Hopefully, you found each one. Answers are to the right.

- | | | |
|-------------|-----------|------------|
| AMAZONITE | EMERALD | PEARL |
| AMETHYST | GARNET | PERIDOT |
| APATITE | IOLITE | QUARTZ |
| AQUAMARINE | JADE | RUBY |
| CARNELIAN | KYANITE | SAPPHIRE |
| CHALCEDONY | LAPIS | TOPAZ |
| CHRYSOPRASE | MOONSTONE | TOURMALINE |
| CITRINE | OPAL | TURQUOISE |



Franklin Gem and Mineral Museum

25 Phillips Street, Franklin, NC 28734

